

# Redditch Town Hall Community Hub

CGI Document

# aew architects

## together we

create buildings and interiors, masterplan  
and design urban spaces, we work with the  
virtual and the real, we make places to work,  
live and play, we volunteer and fundraise,  
we collaborate with each other, with every  
client on every project .

this is the work we do **everyday.**

**AEW Job Reference**

12905

**Issuing Date**

30 June 2023

**Document Reference**

REDACTED

**Revision**

P01

CGI

## 3D view

View of new circulation stair from Alcester Street

For illustrative purposes only



CGI

## 3D view

View of new main entrance from Walter Stranz Square

For illustrative purposes only

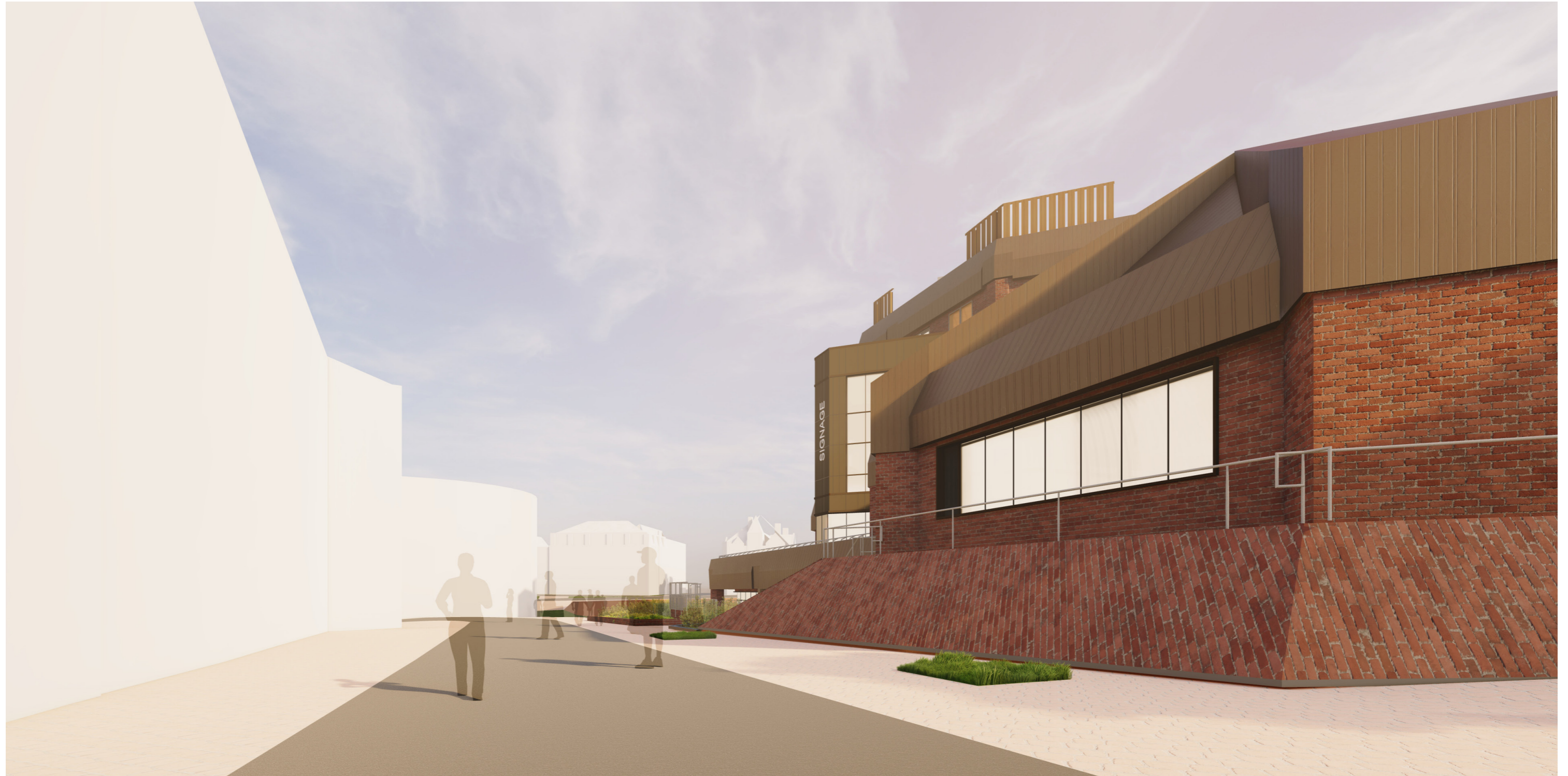


CGI

## 3D view

View of new circulation stair from Alcester Street

For illustrative purposes only



CGI

## 3D view

View of new circulation stair from corner of Grove Street and Alcester Street

For illustrative purposes only



CGI

## 3D view

Aerial view of new circulation stair

For illustrative purposes only



aeu architects  
trinity court  
16 john dalton street  
manchester M2 6HY  
T: 0161 214 4370  
[www.aeuarchitects.com](http://www.aeuarchitects.com)





# inclusivity & accessibility | considerations



**considerations;**

- hearing impaired
- visually impaired
- access for;
  - wheelchair users
  - mobility scooters
  - pram users
- parent & child facilities
- pray/ quiet rooms

**incorporate following provisions and facilities;**

- accessible routes & turning points
- amenities for parent & child
- clear areas for pram & mobility scooter parking
- turning access for up to larger sized mobility scooters
- consideration on colour use
- induction loop installation
- visually impaired aids



# new interventions | the hub

## our welcome

- digital interaction
- inclusive way finding
- engaging display and merchandising

## vertical connection

- accessible
- communal



## high level design features to scheme;

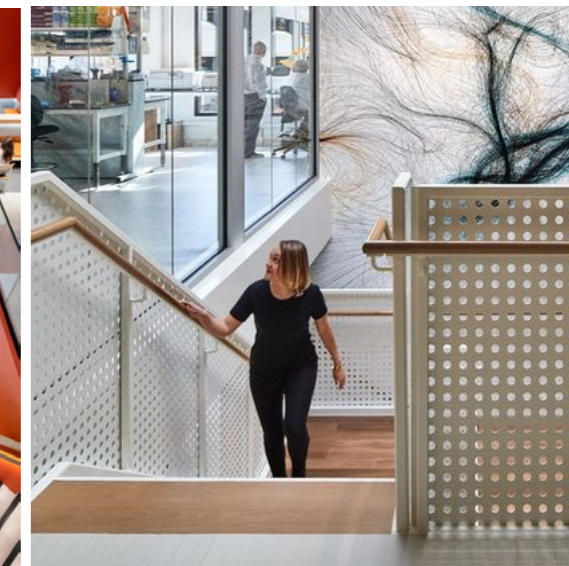
**1**



**2**



**3**





**new entrance arrival**



**children's library**



**council chamber**

# FF & E | initial furniture aesthetics

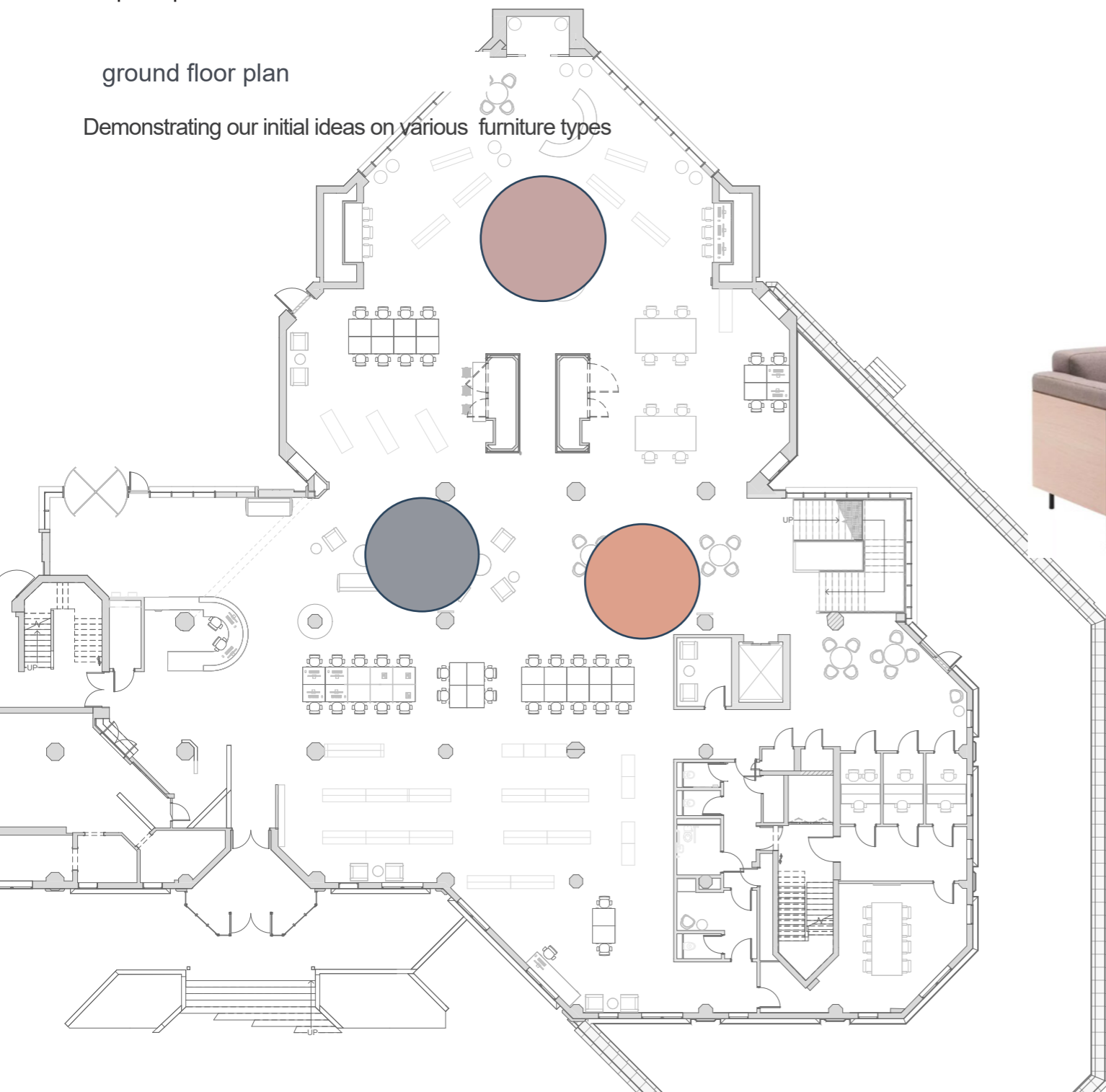
The scheme will have requirements for new furniture elements across key feature areas. Some initial areas are highlighted below and provide opportunity to enhance the offering within the shared and community spaces.

Consideration should be given to;

- + durability
- + fabric grade
- + type
- + flexibility
- + ease of use
- + price points

ground floor plan

Demonstrating our initial ideas on various furniture types



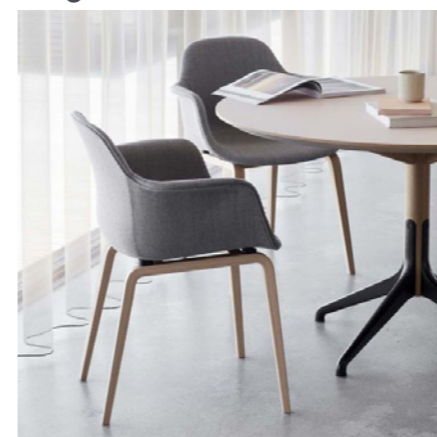
children's area



welcome area



working tables



# FF & E | initial lighting aesthetics

Lighting will be a key element of the design within the Redditch Town Hall – the majority of the space is very open plan and due to the nature of the building the occupiers will need sufficient lighting both functionally and to enhance the experience.

We approach this project with much consideration to the exposed ceilings and ensuring the space feels seamless. Simple architectural lighting in crisp colours will be introduced. Through engagement with lighting specialists we can ensure lighting specifications work in line with project requirements.

## ground floor plan

Demonstrating our initial ideas on various lighting solutions to enhance the space. Considerations to both task and decorative lighting types. These can be reviewed and developed through the next stages.

